

FLAT PLATE PANEL

FLAT PLATE COLLECTORS

Siema started a commercial cooperation with one of the most well-known Greek company; through which we became capable of providing our customers with very high European standard products.

QUALITY AND ELEGANCE

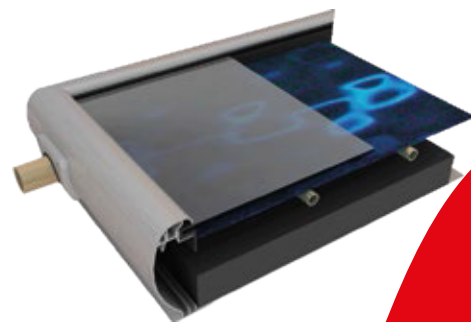
Collector's frame from latest design aluminum profiles.

SUPERIOR SEALING

The internal sealing is achieved with a special E.P.D.M rubber without the use of silicone.

MINIMIZED LOSSES

With strong rock wool insulation ($d = 50 \text{ kg/m}^3$) to the back of the collector and side, we cut to a minimum of collector's heat loss.



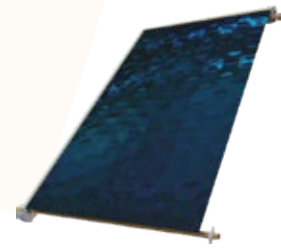
HIGH PERFORMANCE

With selective collectable surface applied to a carcass consisting of copper tubes, with laser technology.

ROBUST CONSTRUCTION

With special aluminum corner links, ensuring the optimum implementation of the framework and strengthening of the whole construction.

Specially designed oval rubber, adapted to exit holes of the collector, to avoid the distortion of copper pipes from the phenomenon of contraction - dilation



Technical characteristics of collector:

1. Frame: aluminum profiles, lateness design with internal corner aluminum links, that ensure the best possible implementation of the framework and the stability of the whole construction.
2. Back to the collector: European grey steel (ral 9006), posted without screw connections, fully sealed.
3. Glass: security, tempered, highly permeable, 4 mm with E. PDM rubber for full sealing.
4. Insulation (back): Rockwool (d = 50kg / m³).
5. Lateral insulation: Rockwool (d = 50kg / m³).
6. Absorber: Single aluminum surface (full plate) 0,5mm selective, coating of titanium, welded with high-tech laser.
7. Absorber's Tubing: bronze tubes Ø 0.8 mm & Ø 22 mm .
8. Specially designed oval rubber, adapted to copper pipes that connect the collector, to prevent the phenomenon of dilation - contraction.

COLECTOR'S TYPE	DIMENSIONS (cm)	COLLECTOR'S SURFACE	WEIGHT per COLLECTOR	PRESSURE DROP (Pa)
SA170	105 x 160 x 8,6	1,68 m ²	32	180
SA200	100 x 200 x 8,6	2,00 m ²	39	200
SA240	120 x 200 x 8,6	2,40 m ²	44.5	200